

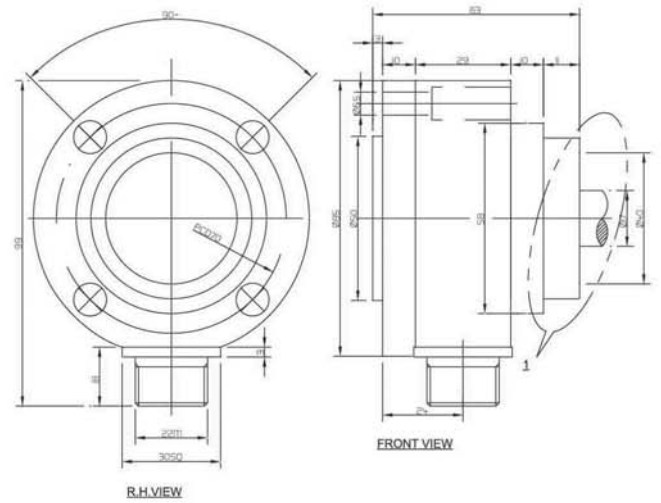
LOADCELLS

Puretronics presents **LOADCELLS** for various automation applications to cover most of the automation in converting or process machines. Measurement of the tension value of all materials including paper, cardboard, plastic film, foil, rubber and wire. Precision measurements of web tension is essential to ensure consistent product quality and to maximize productivity. Different models are available to meet the requirement like Flat type, Round type and Round Hollow type.

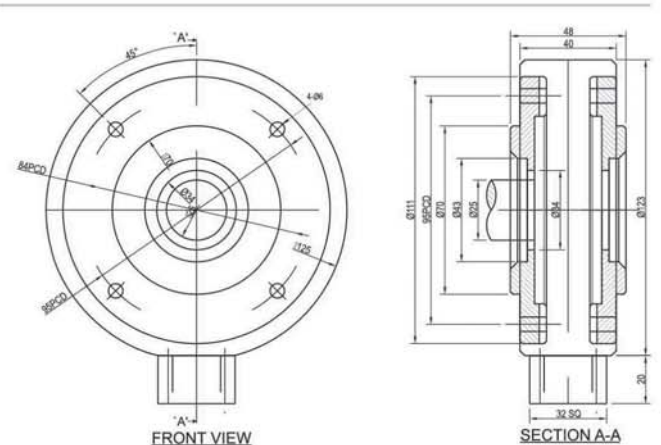


LOAD CELLS FITTING DETAILS

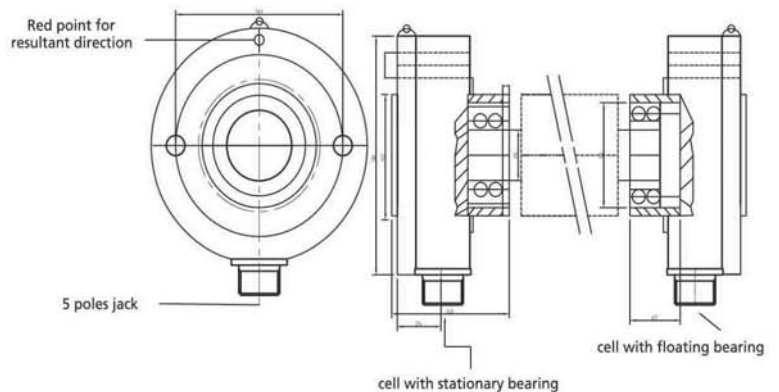
AR 85-20 / 50 Kg



AR 125 - 100 Kg



AR -118 - 100/200 kg.



TYPE OF LOAD CELLS

| TYPE | MODEL NO. | CAPACITY | SHAFT OD | MOUNTING | SIGNAL OUTPUT |
|---------------|-----------------|-----------------|----------|---------------|---------------|
| Round | AR-85-20-17 | 5kg to 50kg | 17mm | On Wall | 20mv/10Volt |
| Round | AR-85-50-17 | 50kg to 100kg | 17mm | On Wall | 20mv/10Volt |
| Round | AR-118-100-25 | 100kg to 200kg | 25mm | On Wall | 20mv/10Volt |
| Round | AR-125-100-25 | 100kg to 200kg | 25mm | On Wall | 20mv/10Volt |
| Flat / Pillow | AR-FL195-XXX-40 | 100kg to 2000kg | 40mm | Base Mounting | 20mv/10Volt |

AMPLIFIER (Loadcells) SPECIFICATION

| | |
|---------------------------|---|
| Power Input | Voltage -230VAC, $\pm 5\%$, 50Hz / 60Hz current -200mA Max / 24VDC |
| Excitation to Transducer | 0 to ± 5 V DC Supply / 0 to 10V DC |
| Available Outputs | 0 to 10V / 10mA UNFILTERED / 0 to 20mA UNFILTERED 0 to 10V / 10mA FILTERED / 0 to 20mA FILTERED RS485 |
| Ambient Temperature Range | 0°C to 45°C |

AMPLIFIER WITH DISPLAY



AMPLIFIER DINRAIL MOUNTING



LOAD CELL ACCESSORIES



USER

Feedback for Automation
Directly Drives / PLC etc.
Can be Used for PLC
External Meter
Weigh Base Application



PA 10



PD 20S

AUTO WEB TENSION CONTROLLER

ADVANTAGE

- In printing, Reduction in Linear & Side Registration Problem
- Reduction In Problems of Highly Disturbed Rolls at Unwinding.
- Considerable Reduction in wastage of costly Processing Material.
- On Rewinding Avoid Telescopic Winding, Hence Obtain Tight and Transportable
- Short pay back period.

NO MANUAL SET VALUE

PURETRONICS web tension controller stores the last output voltage to Brake / Motor. Whenever machine is stopped or power Off takes place, It starts the machine with old memorized value, which gives least variation in the tension, gives the leading edge.



AUTO WEB TENSION CONTROLLER

TECHNICAL FEATURES

- Optically isolated Digital inputs.
- Electrically isolated load cell signal with separate power supply for stable result.
- Electrically isolated output Analogue voltage.
- Design to sustain wide power variations without disturbing the performance.
- Under voltage tripping circuitry.
- Relay change over to other interlocking.
- External interlocking possible.
- Separate card for interface.
- Master card is isolated to sustain any external misuse.
- FRC Cable system for handy and neat system.
- Separate power supply card & transformer for Brake.

MICROPROCESSOR BASED ADVANCE TECHNOLOGY

| | |
|-----------------------|---|
| Four Line LCD Display | To show various parameters as per requirement |
| Set Tension | Shows the set tension. |
| Web Tension | Shows actual web tension. |
| Output voltage | Shows output voltage to the Brake / Motor. |



MANUAL TENSION CONTROLLER

USER'S FRIENDLY

For Operation easiness, 10turn Tension set pot is provided to set the desired tension. Start ON - OFF switch with indication.